

ADVANCED AISLE™

CONTAINMENT SYSTEM

MODULAR AND SCALABLE
WITH FULL ACCESS PANELS

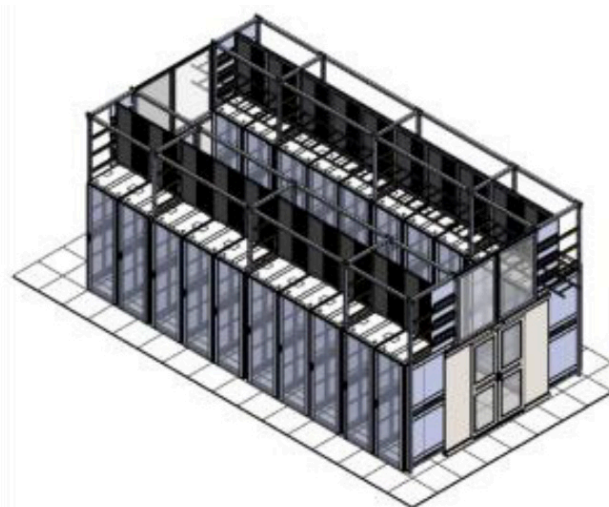
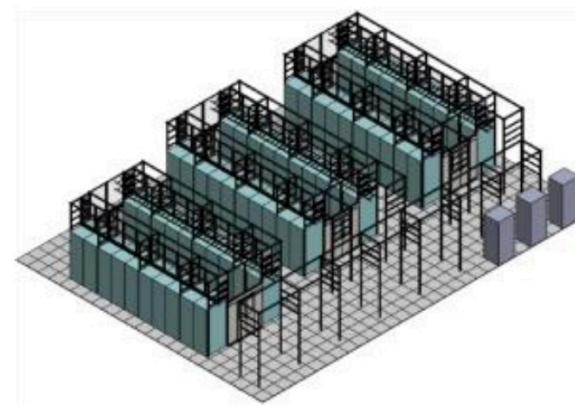
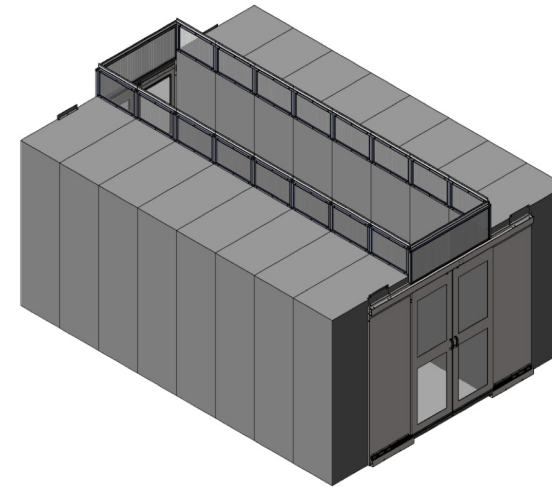
NUCOR®

DATA SYSTEMS

ADVANCED AISLE™ CONTAINMENT SYSTEM

MODULAR AND SCALABLE
WITH FULL ACCESS PANELS

- 3** Overview
- 4** Hot Aisle/Cold Aisle Containment
- 5** Hot Aisle Containment Specific
- 6** Cold Aisle Containment Specific
- 8** Advanced Aisle™ Active-Cap® System
- 10** Installed HAC/CAC Containment



Easy, Cost-Effective Containment

High energy costs and accelerated energy consumption has forced data center managers to implement strategies to achieve separation between the hot and cold air in the data center.

NDS's ADVANCED AISLE™ Containment System provides the most cost effective, easy to implement and site-friendly total approach to achieve this positive separation in existing (retrofit) or new data center builds.

Our comprehensive engineering approach reduces acquisition and installation costs, while providing effective solutions. We can custom design solutions to fit any site situation and, of course, not only provide the best possible solution, but you'll get it fast and without the "premium" costs.

FEATURES

- Hot or Cold Aisle Containment
- Typical ROI of 12 months or less
- Modular sliding or swinging door versions available with optional "soft" self-closing mechanisms and hold-open provisions.
- Multiple door height versions to accommodate varying cabinet heights up to 96" tall cabinet
- Accommodates aisle widths from 36" wide to 96" wide.
- Can be mounted cabinet-to-cabinet or cabinet-to-wall
- Customization of sizes/shapes available to fit any site requirements and conditions including retrofits
- Cold Aisle drop away ceiling panels (clear or opaque) Class A rated, CA State Fire Marshal, UL & FM Global listed and approved
- Hot aisle to plenum light-weight cabinet supported vertical panels speed installation
- Rapid manufacturing times insure availability that meets your needs
- Standard colors—Black, Glacier White or Gray. Custom colors upon request

HOT AISLE/COLD AISLE CONTAINMENT DOORS

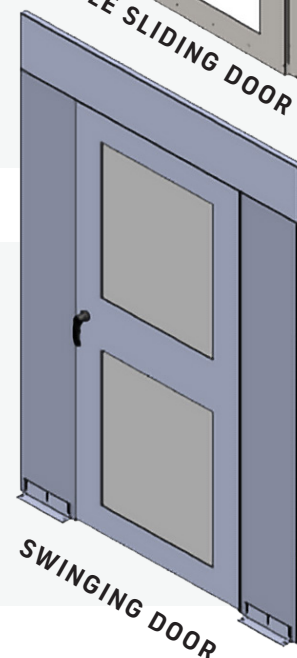
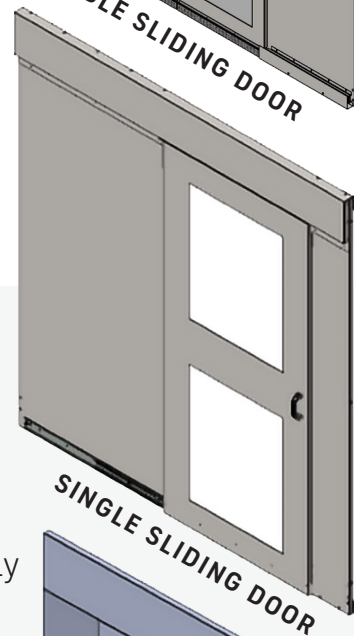
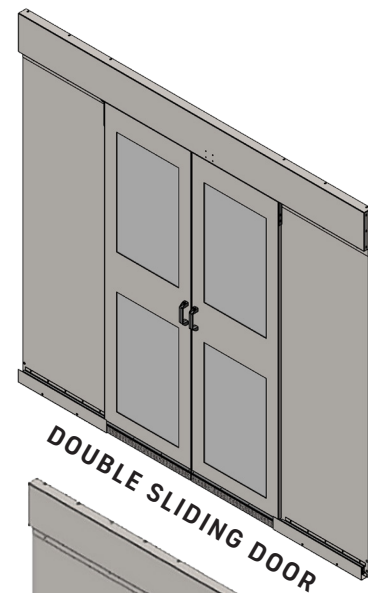
- Available in sliding or swinging versions
- No threshold design allows for clear aisle access
- Clear or twin-wall polycarbonate inserts available
- Sliding or swinging doors available in "diagonal" configurations for uneven row ends
- Sliding or swinging doors can be installed cabinet-to-cabinet or cabinet-to-wall
- FM Global sight-window optional

SLIDING DOOR FEATURES

- Available options to fit from 36" to 96" wide aisles with optional filler panel kits
- Sliding doors available in single or double sliding versions, both with available optional "soft" self-closing mechanisms and hold-open feature to keep doors open when they are fully extended
- Single sliding doors available in left or right opening direction

SWINGING DOOR FEATURES

- Available options to fit from 36" to 96" wide aisles with optional filler panel kits
- Swinging door options include top or full viewing inserts
- Swinging doors are field reversible from left to right
- Swinging door optional patented FLOWBOOST® design maximizes flow of hot aisle air towards return air ducts

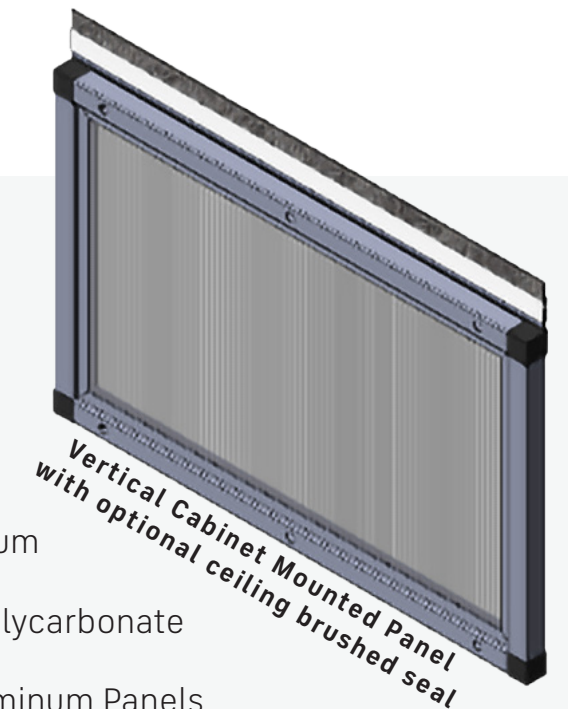


HOT AISLE CONTAINMENT SPECIFIC

HOT AISLE CONTAINMENT SPECIFIC

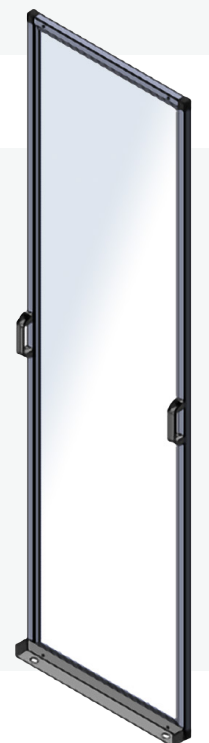
VERTICAL CABINET MOUNTED PANEL FEATURES

- Cabinet mounted panels are designed to extend from cabinet top to the ceiling or pre-determined height
- Available in virtually any width up to 96" wide
- Options to fit from 36" to 96" wide aisles available
- Frames are made from light-weight aircraft aluminum extrusion
- Insert material is light-weight but rigid twin wall polycarbonate
- Available in clear, tinted and solid options
- Optional FM Global Material (Boltaron) or Solid Aluminum Panels
- Optional ceiling brush seals
- Easily removable for top-of-cabinet access
- Vertical panels are mounted to cabinets with brackets



RACK OR AISLE BLOCKING PANEL FEATURES

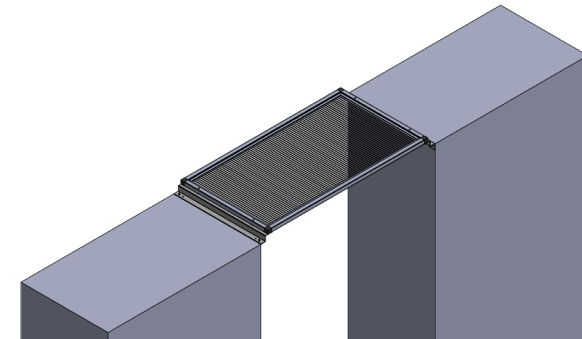
- Used to fill in-row gaps or spaces when cabinets are not present or odd-sized spaces exist
- Can be used to create floor-to-containment panel "walls"
- Available in virtually any width up to 50" wide
- Frames are made from light-weight aircraft aluminum extrusion
- Insert material is light-weight but rigid twin wall polycarbonate
- Available in clear and tinted options
- Optional brush seals
- Movable and changeable in field



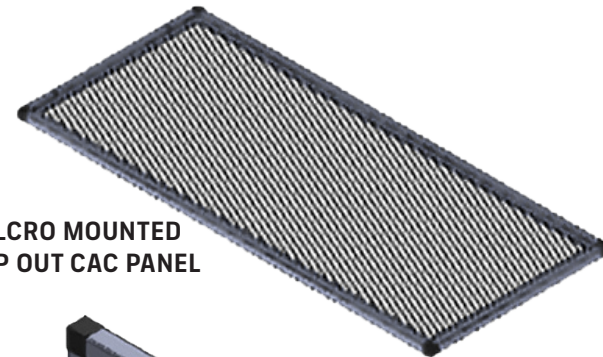
COLD AISLE CONTAINMENT SPECIFIC

DROP OUT CAC PANEL FEATURES

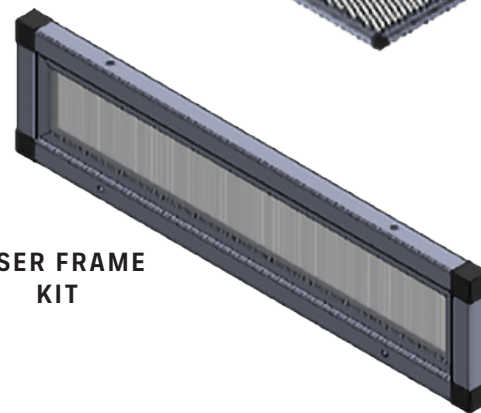
- Class A rated, CA State Fire Marshal approved, UL & FM Global listed
- Options available to fit from 36" to 96" wide aisles
- Insert material is designed to soften and dropout away during a fire
- Available in clear and opaque options
- Easily removable for top-of-cabinet access
- Can be mounted to cabinets with brackets or Velcro
- Integrates with all other NDS containment options



CABINET BRACKET MOUNTED



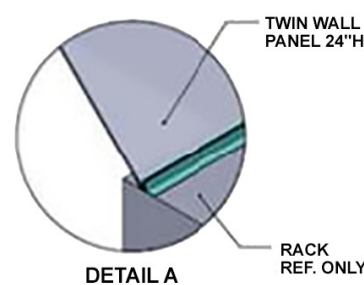
VELCRO MOUNTED
DROP OUT CAC PANEL



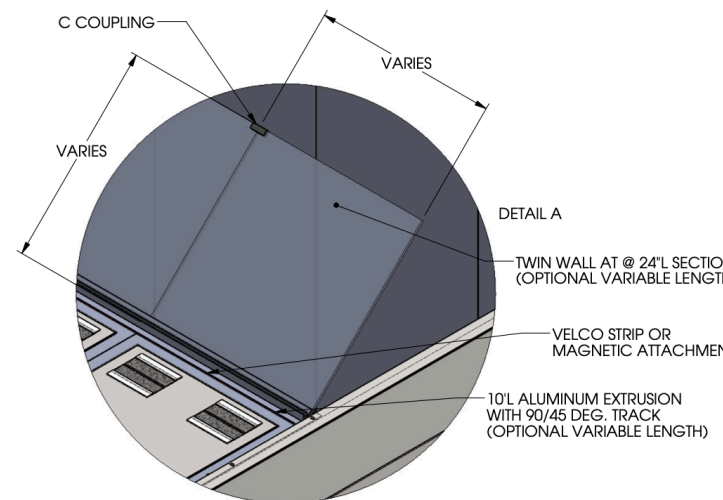
RISER FRAME
KIT

RISER FRAME KIT FEATURES

- Riser kits adapt to different height cabinets in same row or to raise CAC roof height on shorter cabinet rows
- Can be any height - up to 36"
- Can be any width - up to 50"
- Custom sizes available to adapt over non-standard in-row conditions such as in-row cooling units



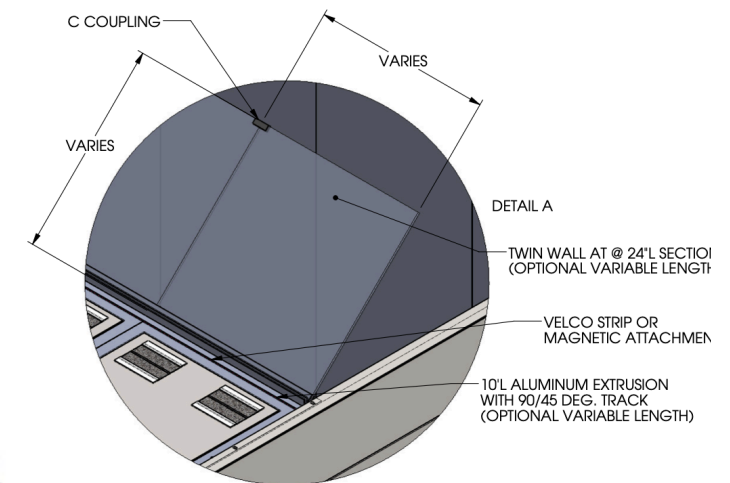
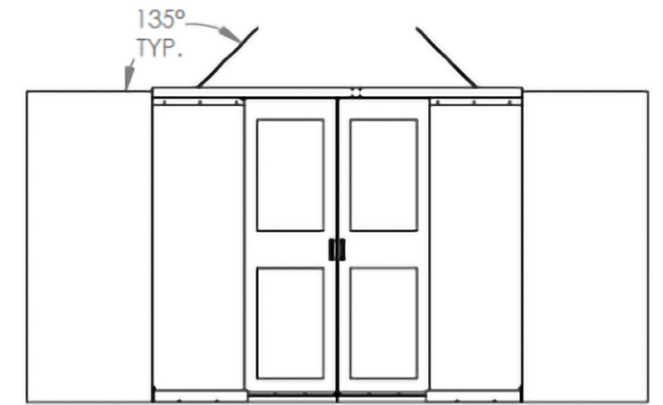
DETAIL A



DETAIL A

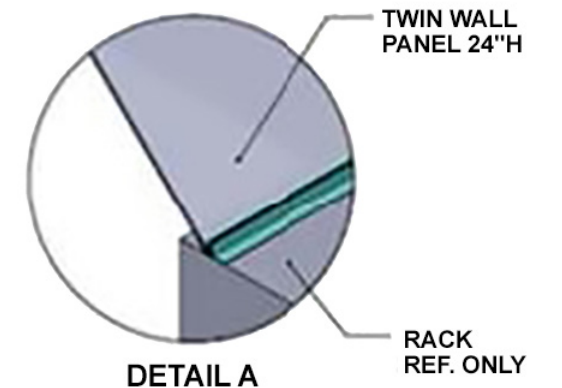
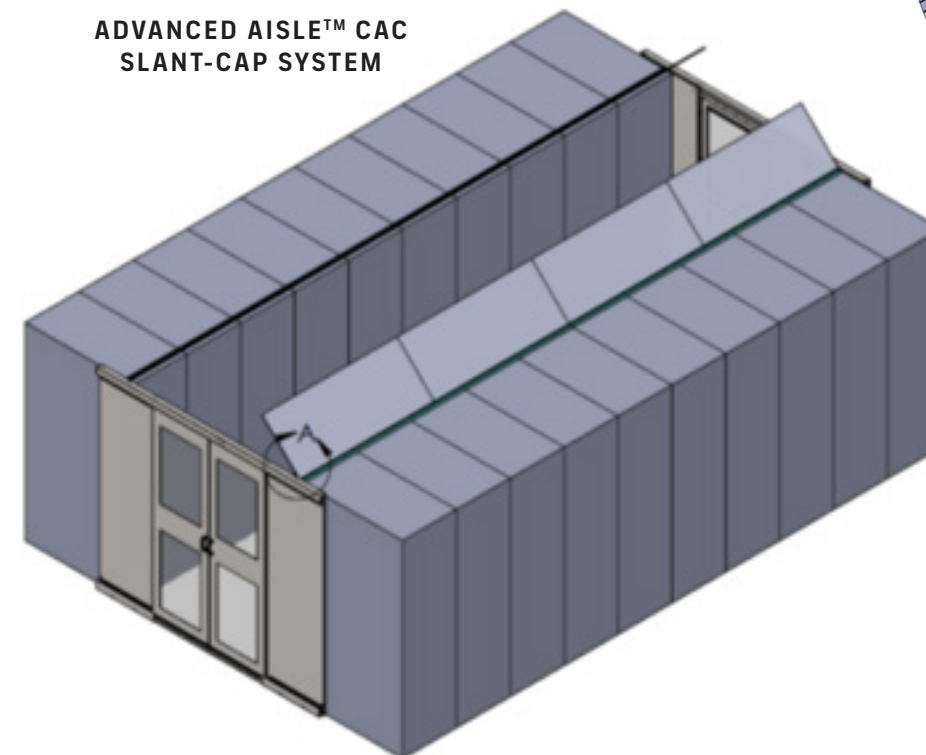
ADVANCED AISLE™ CAC SLANT-CAP SYSTEM FEATURES

- Extruded Aluminum Cabinet Top-Mounting
- Poly Gal Twin Wall Material
- UL Approved, ASTM-E-84 Class A Certified
- Installation available in vertical or 45-degree orientation
- Provides a quick modular tool-less installation
- Movable and changeable in the field
- Tool-less Velcro or magnetic mounting



DETAIL A

ADVANCED AISLE™ CAC SLANT-CAP SYSTEM



DETAIL A

TWIN WALL
PANEL 24" H

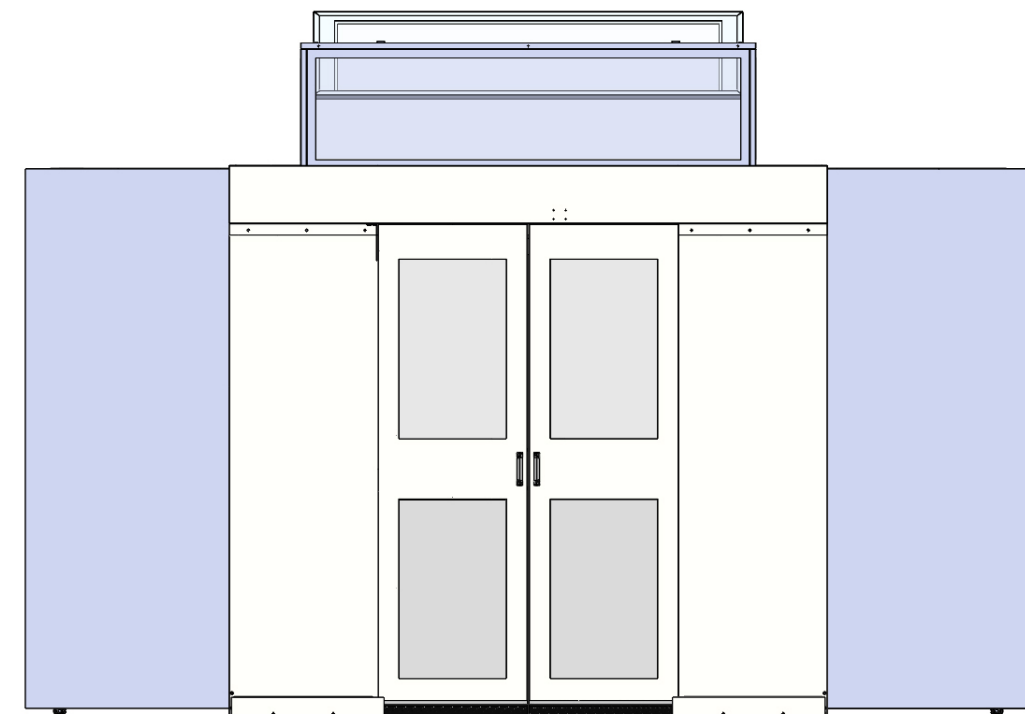
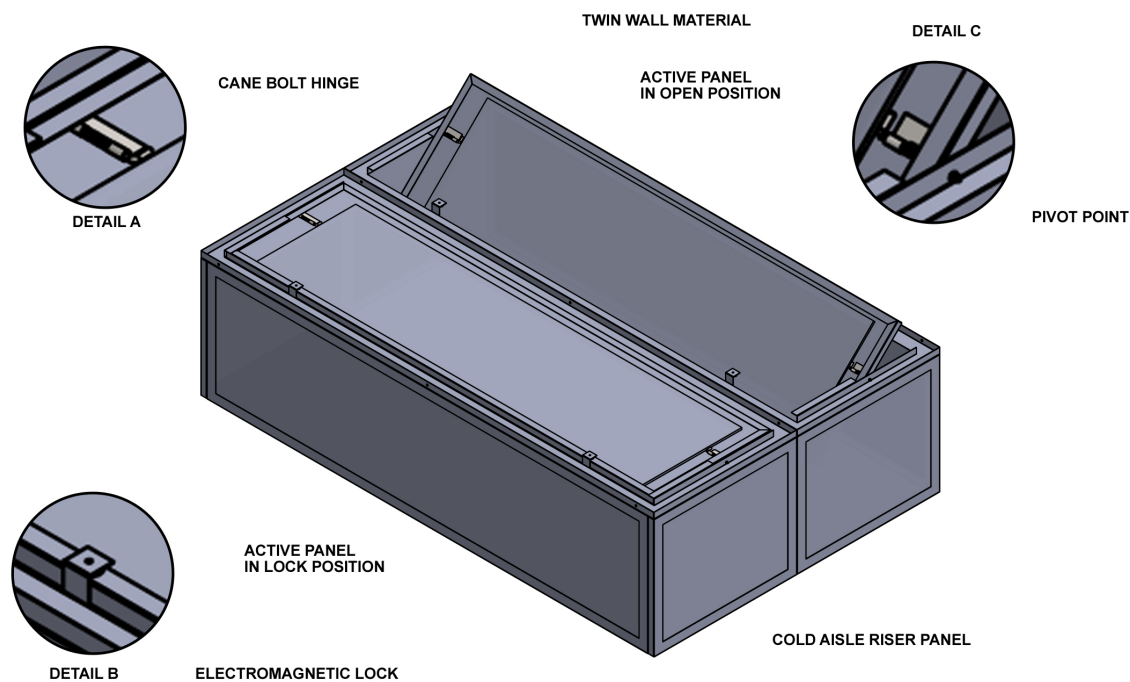
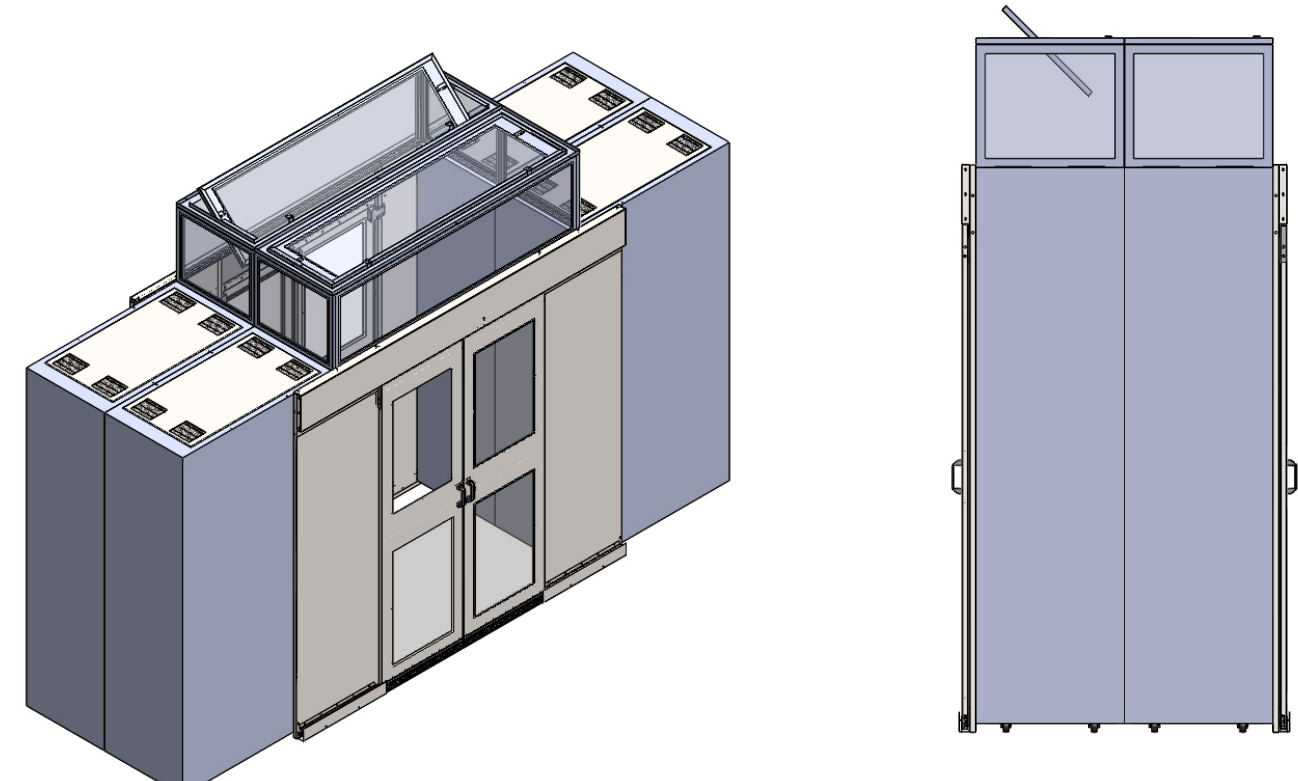
RACK
REF. ONLY

ADVANCED AISLE™ CONTAINMENT SYSTEM

ADVANCED AISLE™ ACTIVE-CAP® SYSTEM

DROP OUT CAC PANEL FEATURES

- Automatic Opening Roof Panels allow sprinkler coverage in the aisle upon building fire or smoke system activations
- No need for sprinkler or other fire suppression penetrations in CAC
- NFPA75 compliance
- Incorporates electro magnets to hold the panels closed until the building fire system activates and power is removed
- DC24V powered
- UL Approved, ASTM-E-84 Class A Certified
- No interference with aisle exits or headroom
- Direct mounts to all NDS cabinet systems, regardless of heights/widths
- Retro fittable to accommodate vendor neutral cabinets
- Assembles on-site and comes pre-engineered and fabricated to size
- Multiple cabinet widths available as standard (custom widths available):
 - 24" wide | 28" wide | 30" wide | 31.5" wide
- Multiple aisle widths available as standard (custom widths available):
 - 48" Aisle | 60" Aisle | 72" Aisle | 84" Aisle
- Roof panels are removable while structure remains in place



ADVANCED AISLE™ PATHWAY SUPPORT STRUCTURES
INSTALLED HAC/CAC
CONTAINMENT





NUCOR[®]
DATA SYSTEMS

TEL: 909-796-6200

FAX: 909-796-6223

sales@nucordatasystems.com

1385 S Tippencanoe Ave., San Bernardino, CA 92408

NUCORDATASYSTEMS.COM